

U.S. Army Public Health Center

# Army Influenza Activity Report

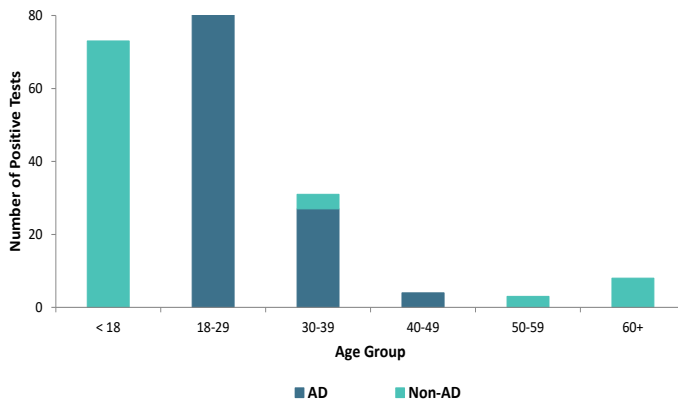
Week ending 09 April 2022 (Week 14)

## SUMMARY

Influenza activity increased in the Army population during surveillance week 14. Three hundred and twenty-six positive influenza A and fifteen influenza B specimens were reported during surveillance week 14. One influenza-associated hospitalization was reported in week 14; the season total thus far is seventeen compared to four influenza-associated hospitalizations reported as of this time last season. Of the specimens that tested positive for select respiratory illnesses, among non-AD beneficiaries, 76.8% were collected from individuals younger than 18 during surveillance week 14. Among AD service members, 78.5% of positive specimens were collected from individuals 18-29 years of age. Nationwide, influenza activity is increasing in most areas of the country with 8.4% of specimens tested by clinical laboratories being positive for influenza A or B.

## DEMOGRAPHICS

Positive Respiratory Specimen Results from Army MTFs by Age Group and Beneficiary Status, Week 14



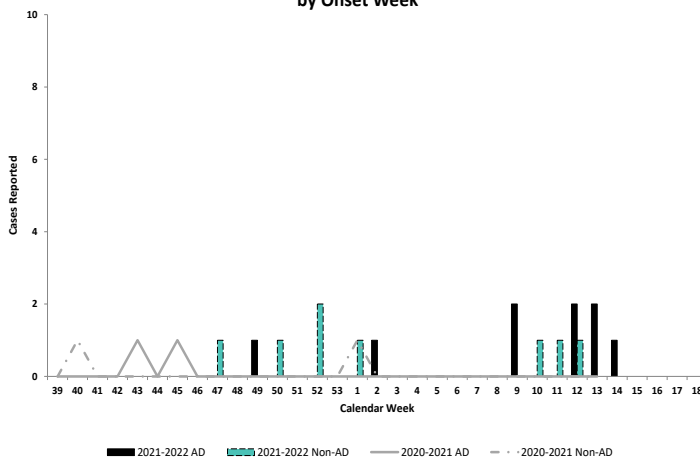
**AD:** One hundred and forty-four positive respiratory specimens were collected from active-duty (AD) service members (SMs) during week 14; 78.5% (n=113) of the positive specimens were collected from SMs 18-29 years of age.

**Non-AD:** Ninety-five positive respiratory specimens were collected from non-AD individuals during week 14; 76.8% (n=73) of the positive specimens were collected from individuals under 18 years of age.

*The age and beneficiary status of some cases were not available. Therefore, all calculations involving these variables were conducted using only available data. Differences in total results, and age- and beneficiary status-specific results may be noted throughout the report.*

## INFLUENZA-ASSOCIATED HOSPITALIZATIONS

Army Influenza-Associated Hospitalizations Reported in DRSi by Onset Week



One influenza-associated hospitalization with an onset date in week 14 was reported to the Disease Reporting System internet (DRSi). The hospitalized individual was an AD Soldier. The season total thus far is seventeen hospitalizations. During the 2020-2021 season, no hospitalizations were reported in week 14 (with four hospitalizations reported from the start of the season through week 14).

*The DRSi does not capture cases older than 65 years old for influenza-associated hospitalizations.*

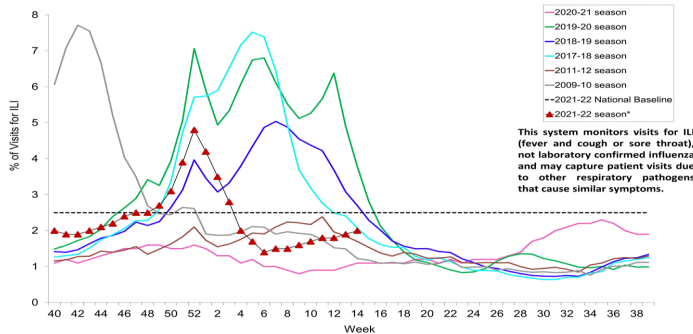
Data are preliminary and subject to change.

Questions?  
[Email APHC DEP](mailto:APHC_DEP)

## ILI ACTIVITY - UNITED STATES

## ILI ACTIVITY - ARMY

Percentage of Outpatient Visits for Respiratory Illness Reported by The U.S. Outpatient Influenza-like Illness Surveillance Network (ILINet), Weekly National Summary, 2021-2022\* and Selected Previous Seasons

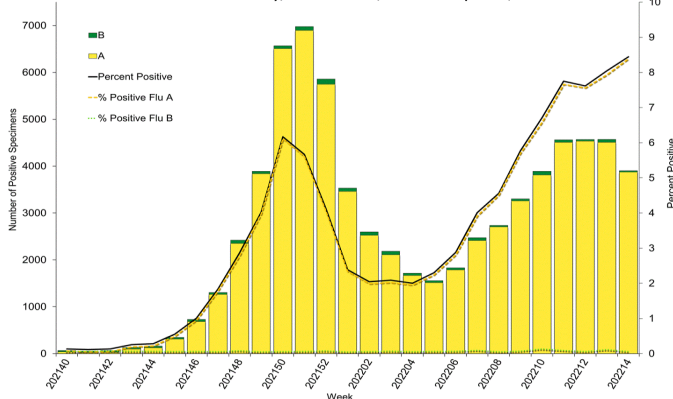


**Data Unavailable**

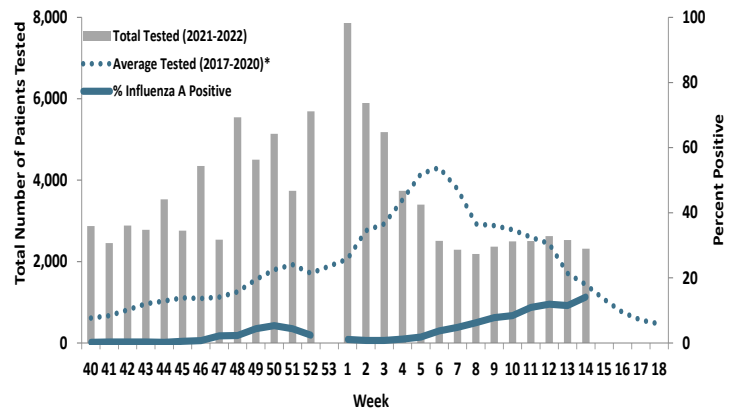
Nationwide in week 14, incident ILI activity was 2.0%; this is below the national baseline of 2.5%. At the time of publishing, incident ILI activity data for the Army population were unavailable.

## LABORATORY RESPIRATORY SPECIMEN TESTING

Influenza Positive Tests Reported to CDC by U.S. Clinical Laboratories, National Summary, October 3, 2021 – April 9, 2022



Proportion of Positive Influenza A Specimens for U.S. Army 2021-2022



Nationwide during week 14, a total of 46,198 specimens were tested for influenza by select clinical laboratories and submitted to the CDC; 3,902 (8.4%) were positive. Influenza A accounted for 98.5% (n=3,883) of the total positive specimens. In the Army population, 326 (14.1%) of the 2,317 specimens tested for influenza A were positive in week 14.

Data from the 2020-2021 influenza season are not included in the Army's average tested calculation due to the unusually low incidence of influenza.

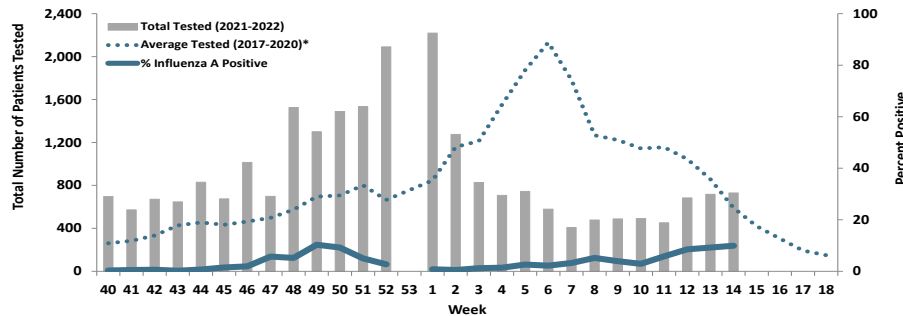
		Week 11	Week 12	Week 13	Week 14	Season Total
Army MTF Laboratory Results, 2021-22	Adenovirus	13	9	11	10	320
	Enterovirus	5	3	2	6	289
	Influenza A	274	315	324	326	3,309
	Influenza B	4	10	10	15	215
	Parainfluenza	9	8	14	10	302
	RSV	5	9	14	5	1,257
	Negative	5,826	6,240	6,461	5,647	233,254
<b>Total</b>	<b>6,136</b>	<b>6,594</b>	<b>6,836</b>	<b>6,019</b>	<b>238,946</b>	

Of the 6,019 test results for respiratory illnesses during week 14, 6.2% (n=372) were positive for any type of respiratory illness. Influenza A accounted for 87.6% (n=326), influenza B accounted for 4.0% (n=15), adenovirus and parainfluenza each accounted for 2.7% (n=10), enterovirus accounted for 1.6% (n=6), and respiratory syncytial accounted for 1.3% (n=5) of the positive results.

**Locations providing week 14 laboratory data as of 6 April 2022:** Carlisle Barracks, Ft. Belvoir, Ft. Benning, Ft. Bliss, Ft. Bragg, Ft. Campbell, Ft. Carson, Ft. Drum, Ft. Gordon, Ft. Hood, Ft. Huachuca, Ft. Irwin, Ft. Jackson, Ft. Knox, Ft. Leavenworth, Ft. Lee, Ft. Lewis, Ft. Meade, Ft. Polk, Ft. Riley, Ft. Rucker, Ft. Sill, Ft. Stewart, Ft. Wainwright, Korea, Landstuhl Regional Medical Center, Redstone Arsenal, the U.S. Military Academy, and Walter Reed National Military Medical Center.

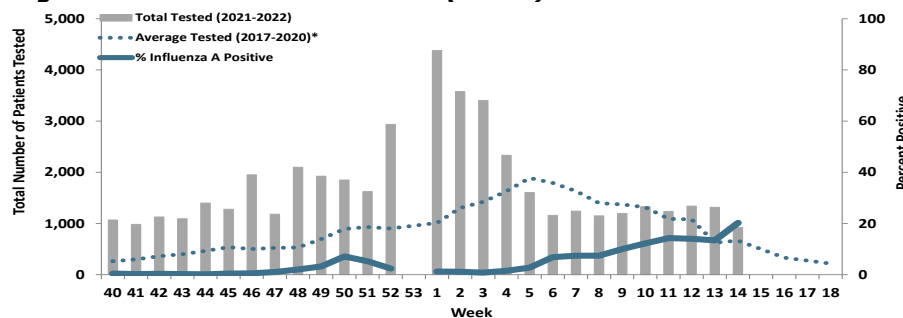
**Proportion of Influenza A Positive Specimens by Week and Region, Army Medical Laboratories, 2021-2022 as Compared to 2017-2020\***

**Regional Health Command - Atlantic (RHC-A)**



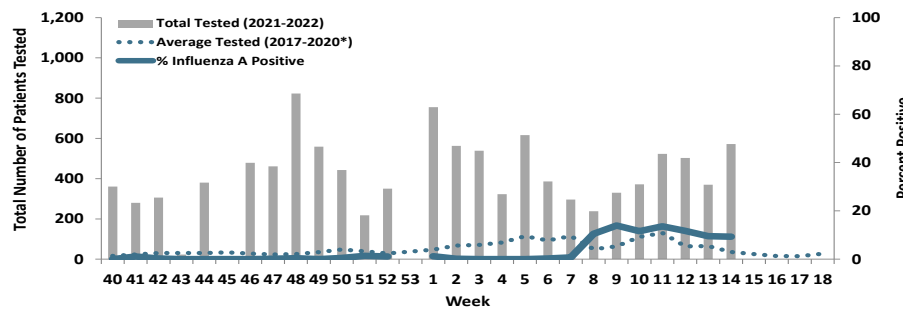
Week 14			
Age Group	AD	Non-AD	Season Total
< 18	0	22	288
18-29	28	5	443
30-39	10	1	109
40-49	2	0	36
50-59	0	1	25
60+	0	3	29
<b>Total</b>	<b>40</b>	<b>32</b>	<b>930</b>

**Regional Health Command - Central (RHC-C)**



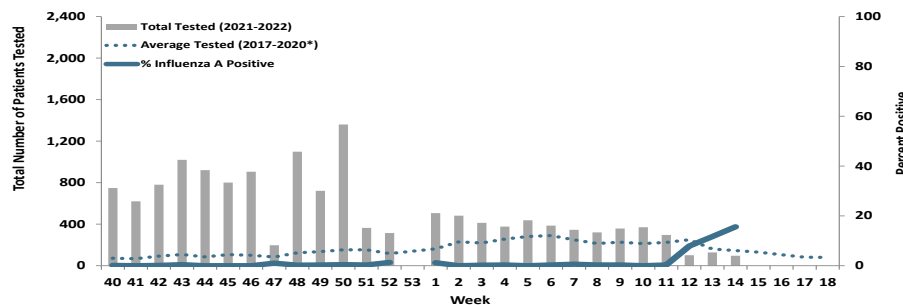
Week 14			
Age Group	AD	Non-AD	Season Total
< 18	0	17	358
18-29	40	2	428
30-39	11	2	157
40-49	0	0	49
50-59	0	2	31
60+	0	2	53
<b>Total</b>	<b>51</b>	<b>25</b>	<b>1076</b>

**Regional Health Command - Europe (RHC-E)**



Week 14			
Age Group	AD	Non-AD	Season Total
< 18	0	10	53
18-29	38	0	251
30-39	2	1	43
40-49	2	0	11
50-59	0	0	4
60+	0	0	2
<b>Total</b>	<b>42</b>	<b>11</b>	<b>364</b>

**Regional Health Command - Pacific (RHC-P)**



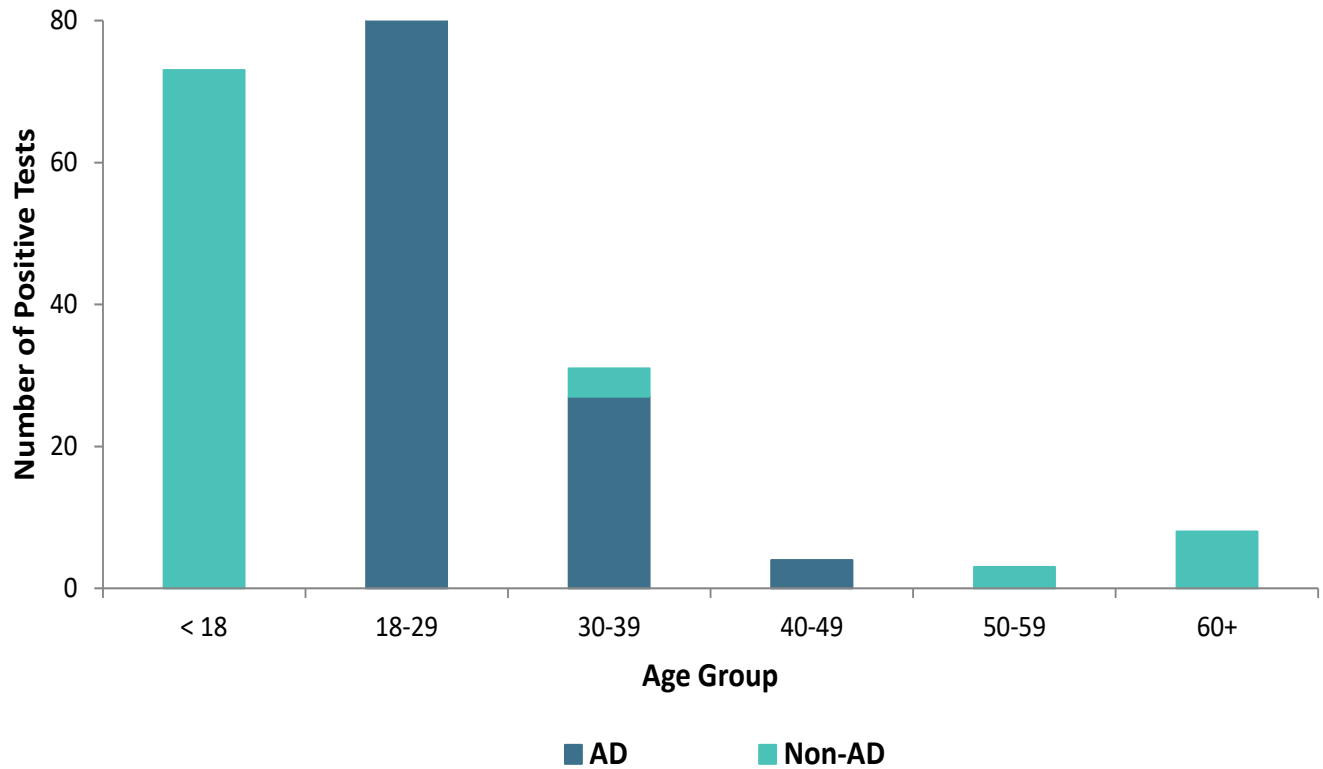
Week 14			
Age Group	AD	Non-AD	Season Total
< 18	0	0	1
18-29	0	0	9
30-39	0	0	0
40-49	0	0	1
50-59	0	0	1
60+	0	0	0
<b>Total</b>	<b>0</b>	<b>0</b>	<b>12</b>

\*2017/2018 influenza season - 2019/2020 influenza season. Data from the 2020-2021 influenza season are not included in the average tested calculation due to the unusually low incidence of influenza.

**Number of Positive Influenza A Specimens by Region and Duty Status**

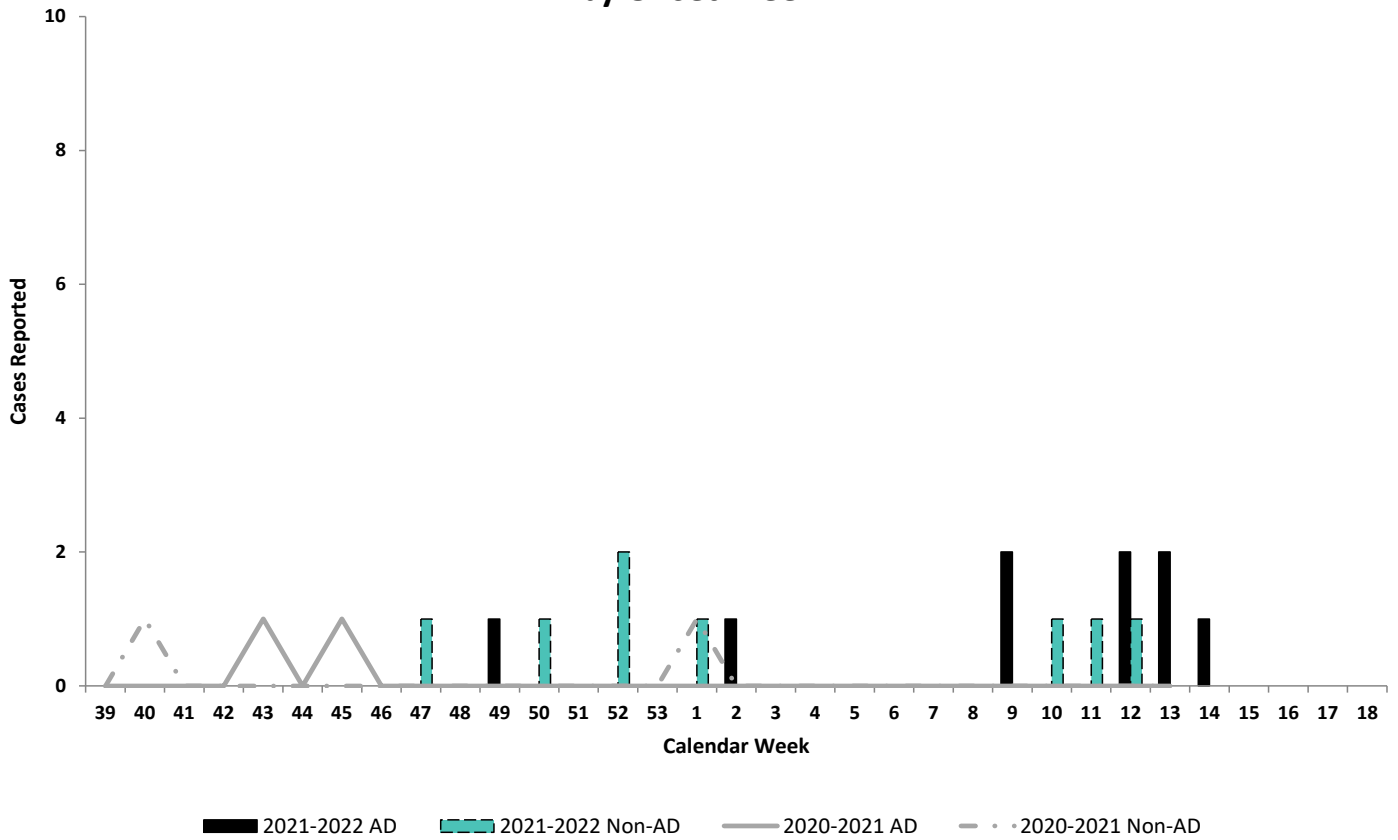
Region	Week 11		Week 12		Week 13		Week 14	
	AD	Non-AD	AD	Non-AD	AD	Non-AD	AD	Non-AD
RHC-A	13	13	28	26	39	25	40	32
RHC-C	36	36	25	28	34	35	51	25
RHC-E	64	7	38	21	25	12	42	11
RHC-P	0	0	1	0	0	0	0	0

**Positive Respiratory Specimen Results from Army MTFs by Age Group and Beneficiary Status, Week 14**





## Army Influenza-Associated Hospitalizations Reported in DRSi by Onset Week

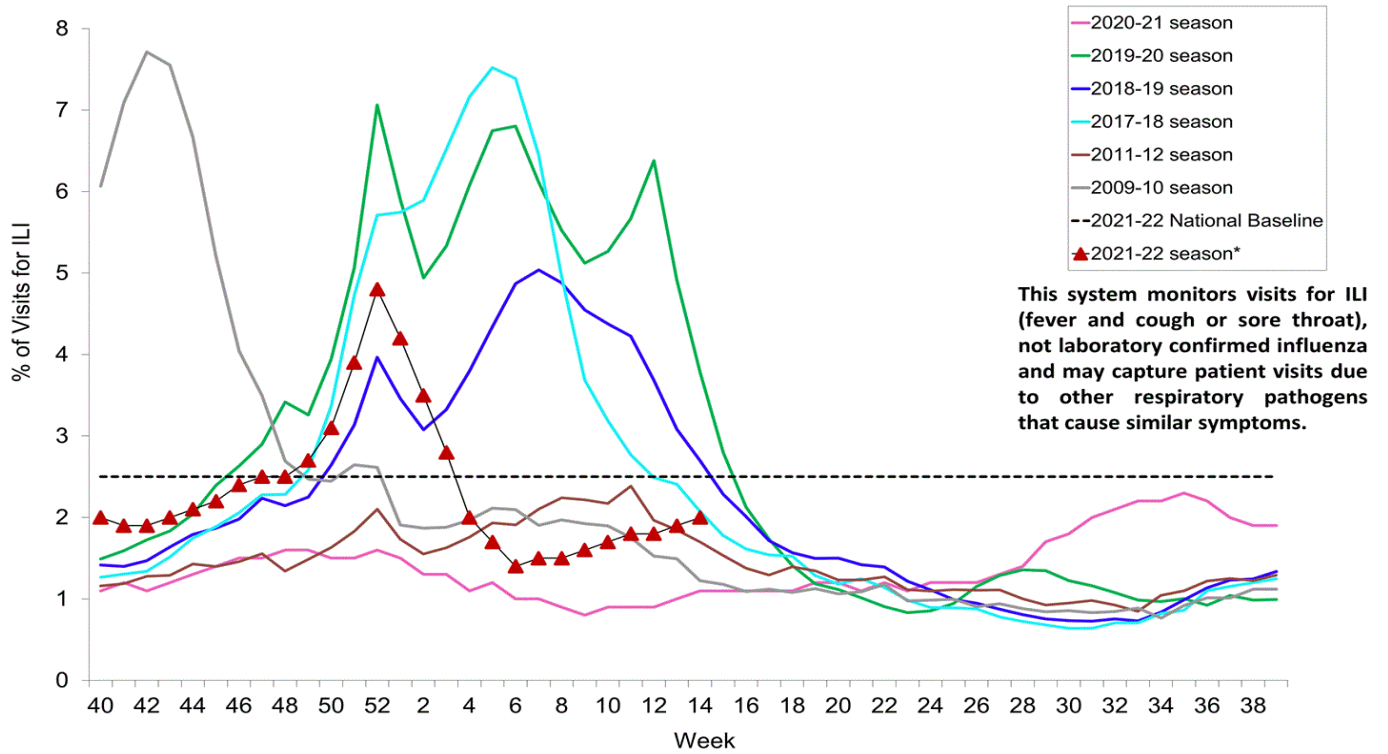


U.S. Army Public Health Center

# Army Influenza Activity Report

Week ending 09 April 2022 (Week 14)

Percentage of Outpatient Visits for Respiratory Illness Reported By The U.S. Outpatient Influenza-like Illness Surveillance Network (ILINet), Weekly National Summary, 2021-2022\* and Selected Previous Seasons



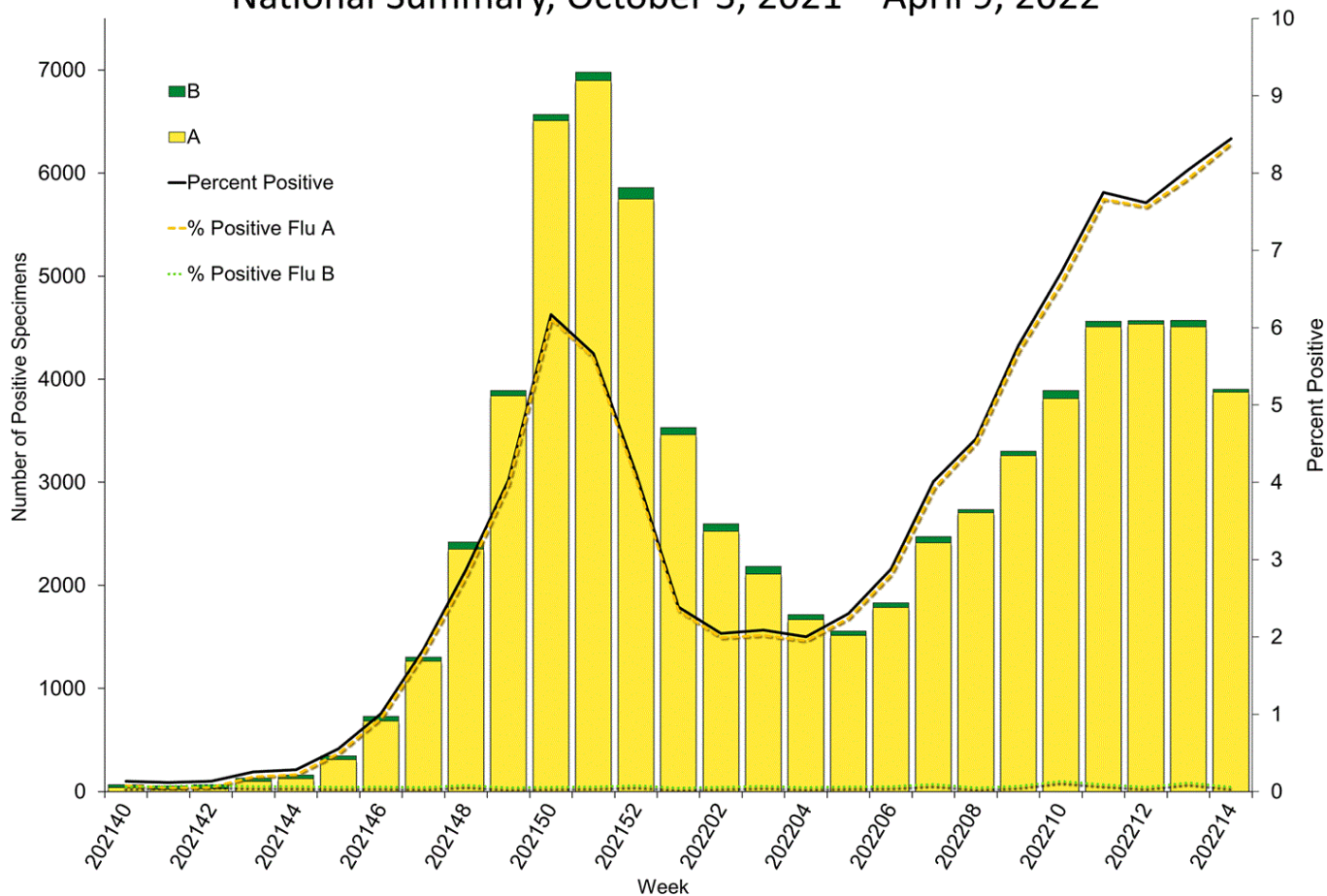
Source: Centers for Disease Control and Prevention (CDC)



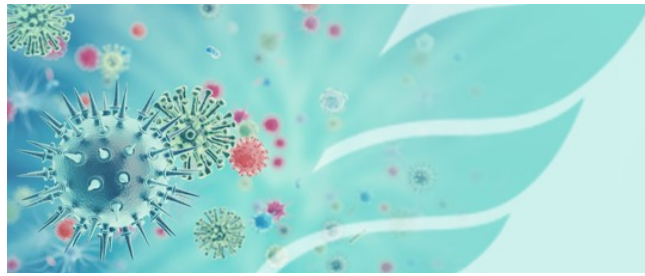
U.S. Army Public Health Center  
**Army Influenza Activity Report**

Week ending 09 April 2022 (Week 14)

Influenza Positive Tests Reported to CDC by U.S. Clinical Laboratories, National Summary, October 3, 2021 – April 9, 2022



Source: Centers for Disease Control and Prevention (CDC)

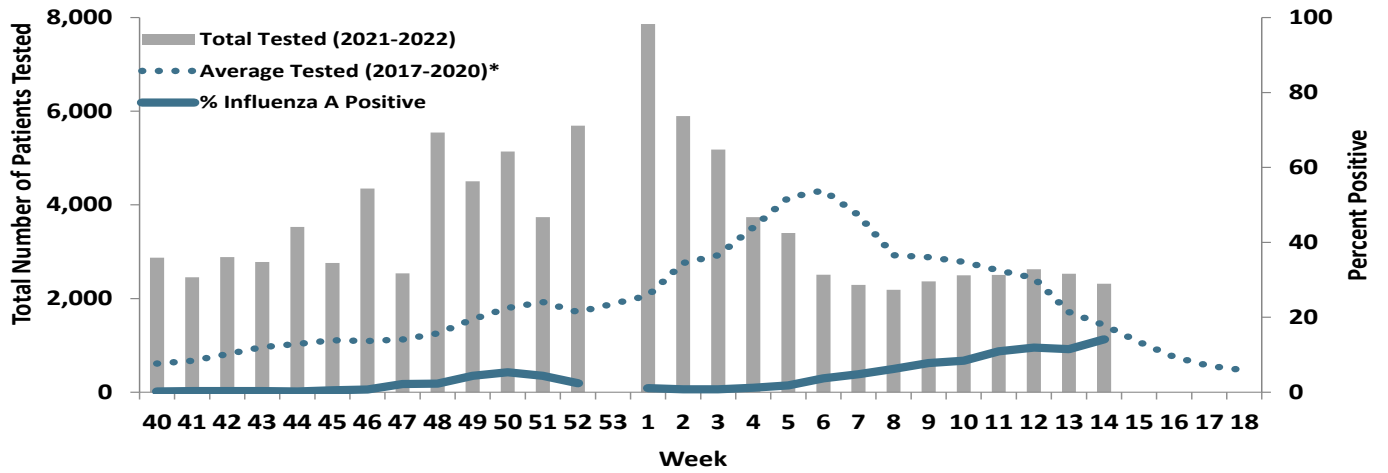


U.S. Army Public Health Center

# Army Influenza Activity Report

Week ending 09 April 2022 (Week 14)

**Proportion of Positive Influenza A Specimens for U.S. Army 2021-2022**



\*2017/2018 influenza season - 2019/2020 influenza season. Data from the 2020-2021 influenza season are not included in the average tested calculation due to the unusually low incidence of influenza.